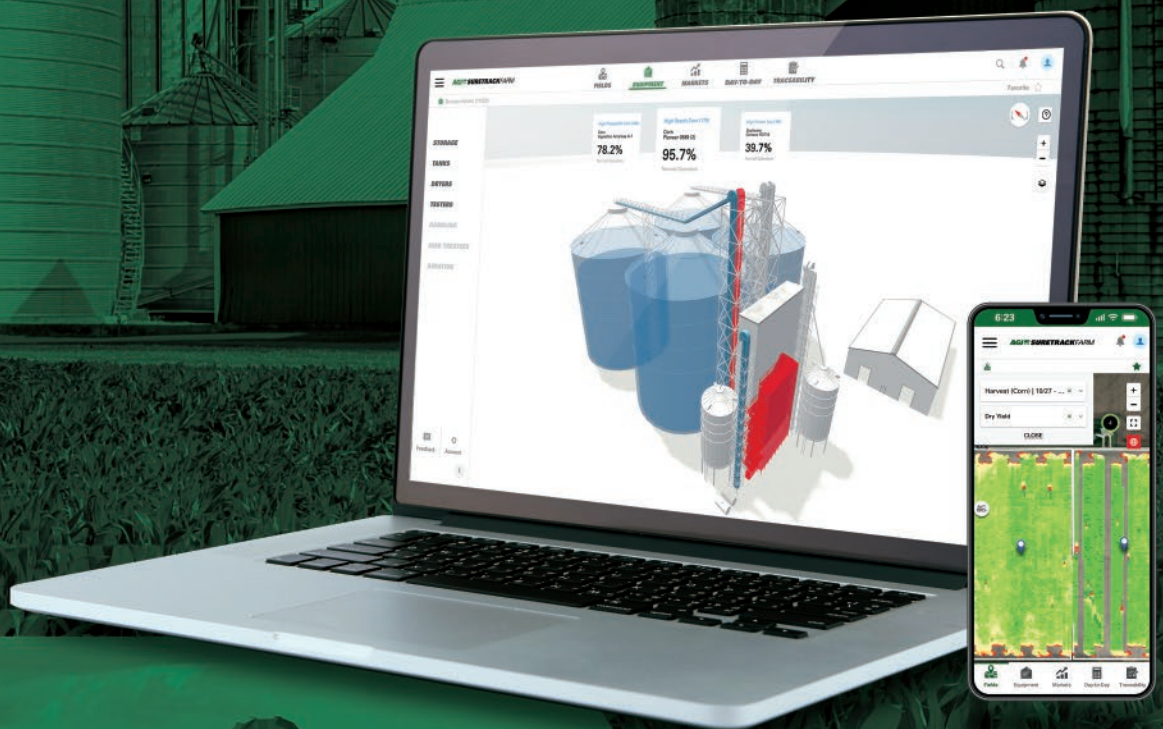


SURETRACK FARM[®]

COMPLETE CROP MANAGEMENT SOLUTION





AGI SURETRACK FARM

Complete Crop Management Solution for Increased Profits

From trade policy and weather to consumer demand, farmers today encounter more challenges than ever before, facing outcomes that they believe they can't control. As the only complete crop production management solution, AGI SureTrack® puts the farmer back in the driver's seat, allowing them to make the decisions that define successes.

GROW. CERTIFY. PROFIT. REPEAT.

SureTrack solves production and marketing challenges in every season on the farm. Let your farm tell its profitability story.

- One location and one login provides access to all of your data.
- Access anytime, anywhere with an internet connected device.
- Data security—You always control your data and the decisions about how to use it.
- Full warranty for the length of your subscription through the Subscription Program.
- 24/7 customer support from dedicated AGI SureTrack sales and coaches.

AGI SureTrack
offers solutions from
the ground up



FIELDS

Track and collect real-time machine and agronomic data. SureTrack's seed selection tool, FieldDataManager and Farmobile PUC™ device help you make profitable decisions and account for input and action on a field-by-field basis.

FIELDS MANAGEMENT TOOLS

- Manage inputs, in every season, to increase efficiency and profitability all year.
- Track year-over-year data to gain insights into management practices.
- Maximize your resources while minimizing labor, man-hours and fatigue.



FIELDS //

MY FIELDS

Never leave profit opportunity on the table when you analyze inputs on a field-by-field basis.

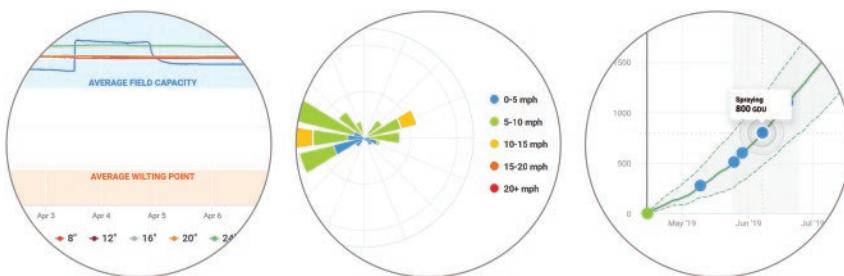
FEATURES

- View, monitor and quickly respond to field conditions based on weather events, soil probe reporting and crop plan goals.
- Get real-time updates on equipment in use in every field, powered by Farmobile®.
- Import existing field shape files or connect to major providers (Farmobile, FieldView™, John Deere®) for quick access.
- Easily create new fields utilizing the in-platform mapping tool.
- Review and correlate past inputs, crop plans and weather events to current crop performance.



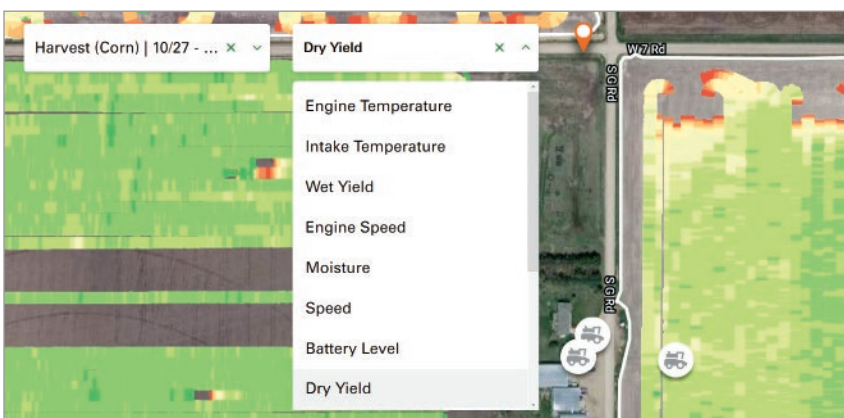
Save Time

At a glance, quickly assess your fields, field events, devices, and field equipment performance.



Improve Performance

Maximize nutrient uptake by knowing soil conditions, wind speed and plant growth.



Plan for Success

Create prescriptions that work by utilizing a responsive field activity plan. Each field plan lets you look at every event, input and application timing to formulate future management opportunities.

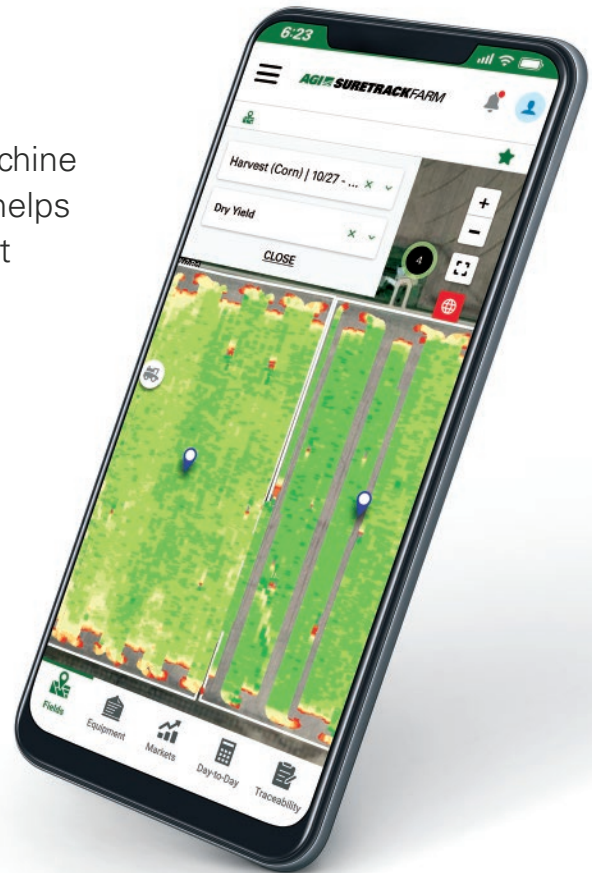
FIELDS //

MACHINES

Farmobile-collected data from across your machine fleet that is easily accessible and meaningful helps you confidently make day-to-day decisions that impact your bottom line.

FEATURES

- Farmobile PUC™ device's data collection, storage and transmission, is easily accessible from your dashboard.
- Data collection that is indiscriminate of most brands, makes and models and easy to move from machine to machine.
- Easy plug-and-farm installation, ready to begin transmitting data right out of the box.
- Monitor location and performance of deployed field equipment.
- Plan according to your customized heatmaps.



Live Performance

Track live location and performance of most connected machinery.

Real-Time Data

Gain insight into your true production costs. From speed to fuel usage, to field shape, learn where the expenses in your operation are generated.

Efficiency

Treat only where necessary, saving time and money.

Powered by
Farmobile®

SEED SELECTION

Reduce inputs: time, nutrients, chemicals, and costs when you select seed varieties that are proven to perform in your area, under your location's growing conditions and challenges.

FEATURES

- Search millions of seed trials based on your yield or purpose goals.
- Filter your search by: Crop, Trial Year, Maturity, Brand, Soil Texture, Traits/Resistances, Irrigation, Location, and Trial Quantity to find varieties to fit your production needs and goals.
- Select individual varieties to view more details, including specific trial information.
- Tag and save favorite varieties to your customized crop planning tool for quick reference.

FILTERS
HIDE

CROP
Corn

TRIAL YEAR
2019

GENERAL
Select...

RELATIVE MATURITY (DAYS)
☐
☐

BRAND
Select...

SOIL TEXTURE
Loam

TRAITS / RESISTANCES
Corn Rootworm

IRRIGATION
Dryland or Irrigated

MINIMUM TRIALS
5

Radius
200 mi

LOCATION
Illinois, USA

SAVE SEARCH

SEARCH RESULTS

SHOW | All

Variety	Add To Crop Plan	Traits	Yield (bu/ac) ↓	Rank	# of Trials
BECKS 5622 AM	ADD TO CROP PLAN	<div> <div> <div> </div> </div> </div>	243.1	23	10
SPECIALTY 45A837	ADD TO CROP PLAN	<div> <div> <div> </div> </div> </div>	241.6	3	9

Easy to Use

Streamline the process of selecting seed varieties that match your goals and needs.

Customize Results

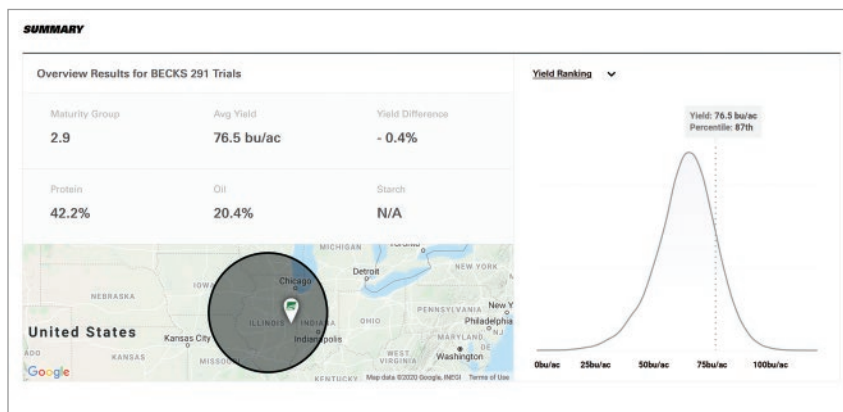
Tailor your results based on needs, location and operation goals.

Compare Yield Totals

Easily review and compare yield totals produced for each seed variety.

View Location Based Results

View what seed trials work in your climate and location, based on geographic radius search results.





FIELDS //

INPUTS

Plant, grow, harvest, store and offer for sale a product that is traceable, from seed bag through storage. Even better, a complete record of your operation's true breakeven cost that is available at your fingertips, giving you the information you need to sell, store or contract your grain.

FEATURES

- Note and save commonly used resources to use in your event plan.
- Select manufacturer information from a pre-built CDMSSM library.
- Easily apply the input data to activities (spraying, spreading, planting...) throughout your season.

Easy Application Recording

Record input quantities and details to produce a thorough account of applied product information.

Single-Source Input Records

Save time and energy knowing your input data is complete and stored in one location.

Inputs					
Once your field inputs are added, you can apply those inputs to any field event activity (ie, Spraying, Spreading, or Planting) – before, during, or after planting your crop.					
[+] ADD INPUTS					
MY FIELD INPUTS					
Rozol® Ground Squirrel Bait Liphotech, Inc.	Organic: No Type: Vertebrate Control	MORE INFO	ADD TO EVENT PLAN		EPA: 7173-305
Pro-Mate® Mask-It Helena Agri-Enterprises, LLC	Organic: No Type: Adjuvant	MORE INFO	ADD TO EVENT PLAN		EPA: EXEMPT
1300 Orthene® TR Total Release Insecticide BASF Ag Products	Organic: No Type: Insecticide	MORE INFO	ADD TO EVENT PLAN		EPA: 499-421
0-0-50 Sulfate of Potash	Organic: No	MORE INFO	ADD TO EVENT PLAN		EPA: EXEMPT

EVENT PLANS

Monitor and gauge the effectiveness of production practices year-round to learn more about what practices are truly working in your operation.

FEATURES

- Record cultivation, spraying, spreading and irrigation events.
- Assign a field id to each event to allocate and track input usage.
- Use the notes feature to record operator name and log weather/wind, field and equipment challenges.
- Organize and record each field event by date, completion status, field id, inputs applied and notes.

Edit Event Plan

Save your custom plan and apply to any/all fields. Create as many plans as you like or simply use the default provided. At your convenience, you can create additional events, add notes and reminders in each section, or remove events from your schedule or crop plan.

Practice *

Conventional

Crop *

Corn

Plan Name *

Conventional Corn

+

Add Event to Plan

Cultivate - Before Planting

Plant

Spray - After Planting

TIME FRAME *

Accumulated GDU

GROWTH DEGREE UNITS *

ADD

INPUT

Select...

SPRAY RATE - (POUNDS / ACRE)

Enter Amount

+

ADD INPUT

Inputs

Roundup WeatherMAXB

Organic No

10 Oz / Gallon

Edit

Delete

NOTES

Check Nozzles

Spray - After Planting 2

Spray - After Planting 3

Harvest

SAVE EVENT PLAN

START OVER



Activity Evaluation

Gauge efficacy of as-applied events that correlate to operator, weather and equipment.

Event Benchmarking

Correlate and measure crop performance to specific events to benchmark your production processes.

Operation Protection

Build a detailed record of every farming event for legal/regulatory proof.

Cost Insights

Tie specific input expenses to farming events to gain insight into their value.

FIELDS //

CROP PLANS

Protect your farm and your bottom-line with up-to-date, accurate and detailed crop plans.

FEATURES

- Create crop plans that include variety, event plans, tillable acres, planted/harvested acres and a running total of achieved Growing Degree Units (GDU).
- Forecast planting and harvesting dates to quickly ensure the variety selected will reach maturity.
- Quickly review crop plans and associated details.



Crop Plan Overview

Set up the commodities and practices you will be using and pick your varieties you will be growing for each commodity. You can assign event plans to setup all of your planned events for the year, and automatically calculate when they will happen. Track your goals and actuals on each event.

2020

ADD NEW CROPS

PRACTICE * Select a practice CROP * Select a crop Save

CURRENT CROP PLANS

Soybeans (Conventional) Add Variety

1ST CHOICE FB 2558 LL 1000 GDU 64 Acres Add Field

EVENT	FIELD	ACRES	PLANTED	HARVEST	Event Plan
	Weber 80	64	N/A	N/A	Cyrus Soybeans 2020
Planting			05/13/2020	25 k seeds	Edit Record Actual
Cultivating			04/29/2020	N/A gal	Edit Record Actual
Spreading			05/06/2020	N/A gal	Edit Record Actual
Spraying			05/20/2020	N/A gal	Edit Record Actual
Harvest			06/08/2020	175 bu	Edit Record Actual

Simple to Use

Easily build, track and manage crop plans for current and future use and maximum return.

Historical Evaluation

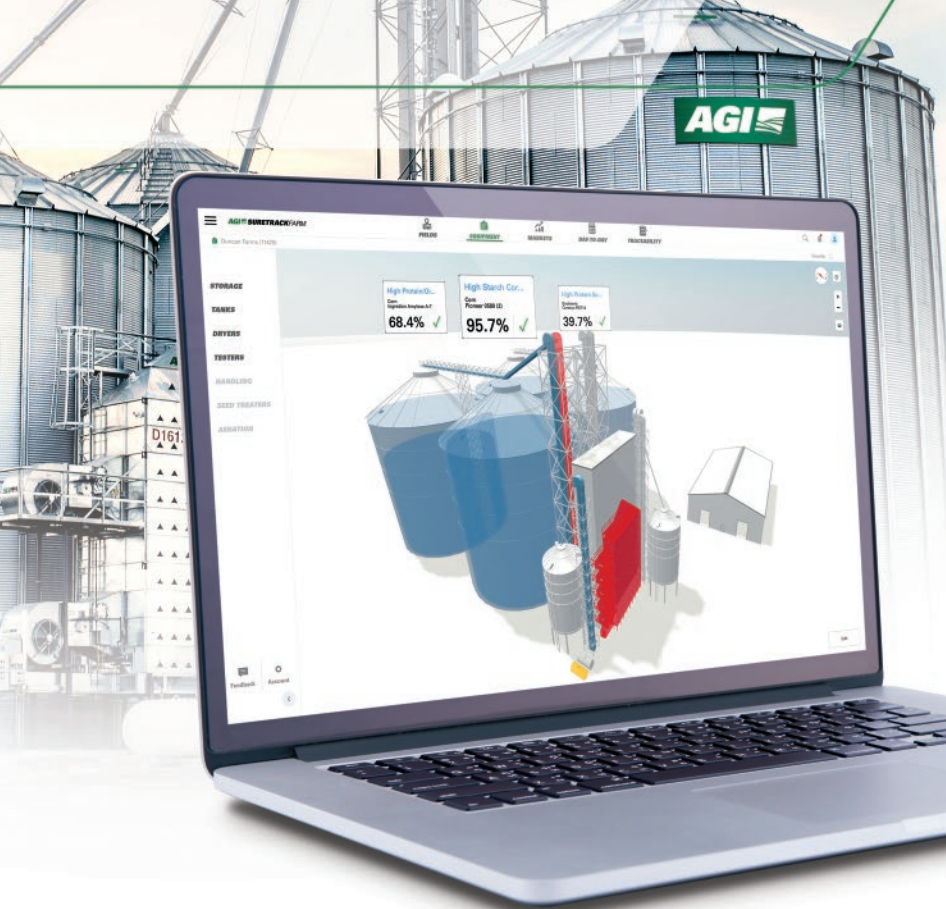
Use past crop plan results to confidently make management decisions, all from one location on the AGI SureTrack® dashboard.

GDU Based Crop Support

Use varietal GDU requirements and accumulation to gauge and support crop performance at any time in the growing season.

Create Traceability

Earn premiums by providing a traceable ingredient, from seed bag to processor storage.



Smart equipment
for the connected
farm operation



Moisture and Temperature Cable



Tank Manager



Perten 9500

EQUIPMENT

Pinpoint critical production practices to increase profit margins in every season on the farm: planting, growing, harvesting, storing and marketing through increased management opportunities with use of BinManager®, TankManager, DryerManager and the Perten 9500. The list of SureTrack Ready equipment continues to grow! *Coming soon: handling, seed treaters and aeration options.*

EQUIPMENT MANAGEMENT TOOLS

- Store, monitor, condition and test to achieve and verify highly marketable grain characteristics.
- Monitor bulk liquids and propane inventories.
- Hit specific moisture targets by equipping almost any dryer to dry with precision.

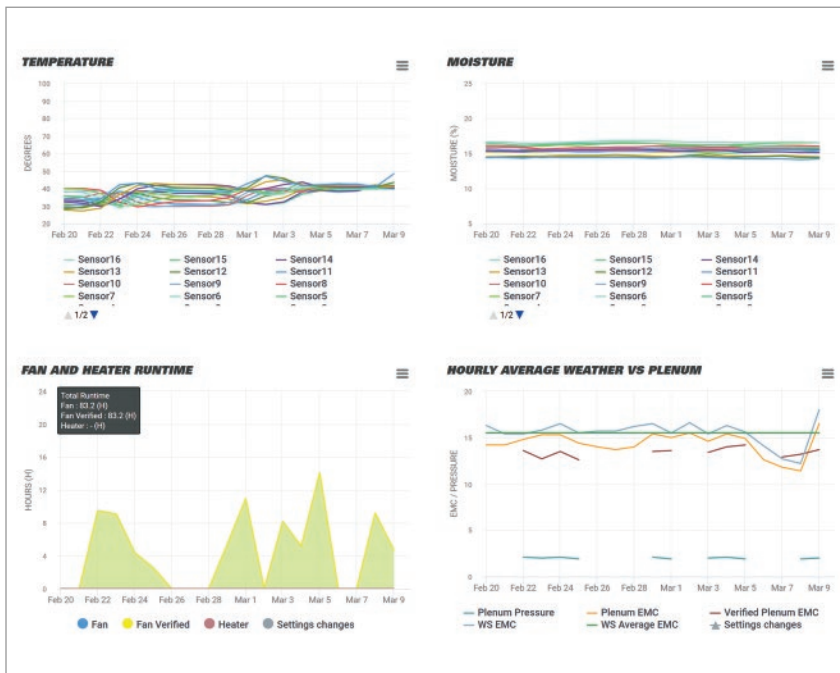
EQUIPMENT //

STORAGE

BinManager's integrated hardware and software provides the only grain storage management option on the market to offer a fully automated preservation and conditioning solution.

FEATURES

- Zero-entry grain bin management.
- Free grain testing by the SureTrack Grain Lab to ensure each bin is calibrated to your specific storage requirements.
- Algorithms based on your grain test results control grain conditioning to ensure every bin is optimized to help achieve your marketing goals.
- Cables offer real-time temperature and moisture monitoring within your dashboard.
- Fans are automated based on your calibration information, saving you both time and money.
- Using real-time 3D visuals, you can monitor grain performance and conditioning anytime and anywhere from an internet connected device.
- Customize alerts/notifications specific to your conditioning and storage needs.



Automated Grain Conditioning

Achieve and maintain target moisture levels while maintaining protein, starch and oil content—allowing you to not only grow for a specific market premium, but store for a specific market premium.

Carry for Greater Profit

Optimize your grain carrying capacity by knowing your grain is in peak condition and ready to sell when the time is right.

Know Your Grain is Secure

Customizable alerts and notifications provide you the peace of mind of knowing your grain is secure.



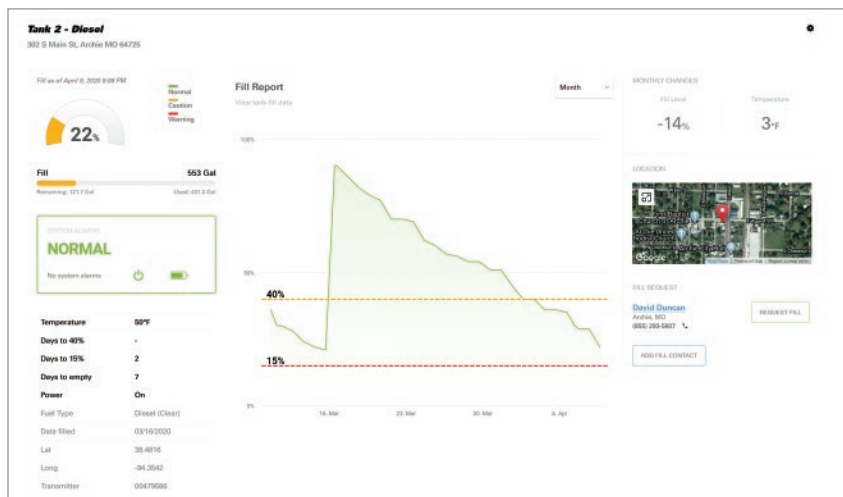
EQUIPMENT //

TANKS

From inventory to usage rates, TankManager provides real-time information on the fill levels of bulk fuel and propane supplies.

FEATURES

- Monitor tank levels of: diesel, water, lube, gasoline, and propane.
- Quick and easy installation, from box to data transmission in under five minutes.
- Customize level alerts and notifications.
- Schedule auto-fill notifications with your bulk provider.



Automated Monitoring

Quickly automate your bulk liquid and propane tank monitoring process for a variety of liquids.

Cost Saving Solution

Save time and money by setting alerts to levels and fill frequencies that fit your operation's needs.

Simple to Use

Only enter your refill location and information once.

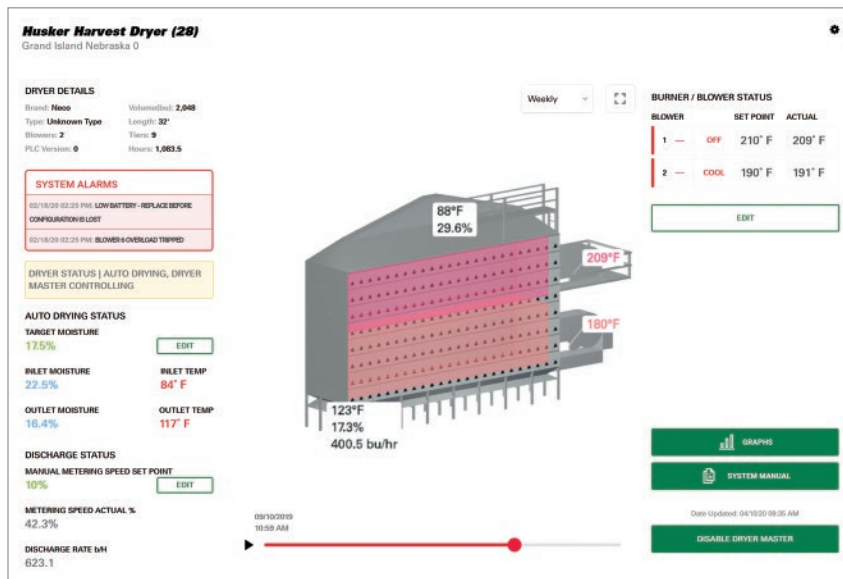
EQUIPMENT //

DRYERS

DryerManager brings another segment of value and convenience to the AGI SureTrack® management solution. The solution integrates software and hardware to allow a grain dryer to be monitored and managed remotely, anytime and anywhere.

FEATURES

- Can be installed on almost any dryer, regardless of brand.
- To automate the drying process, assign a designated value to reach a target moisture level.
- Monitor moisture, temperature and drying progress 24/7.
- Receive alerts and notifications via text or email, making sure to never miss a management opportunity.
- Operated remotely and features an emergency stop, ensuring the safety of both you and your grain.



Cost Saving

Fully automated system increases efficiency and reduces costs.

Support Reliability

Rely on industry-leading AGI SureTrack coaches and field technicians to solve any issues you may have.

Safety

Emergency stop feature keeps you and your grain safe.

TESTERS

From sample to results in less than 30 seconds, the Perten 9500 verifies the quality and characteristics of your grain and directly uploads results to the dashboard, creating the proof you need to reach premium market opportunities.

FEATURES

- Awarded Certificate of Conformance for National Type Equipment Program (NTEP), ensuring consistency and performance in the selling, purchasing, exchanging, custody transfer or establishment of cost for services.
- As one of the fastest analyzers on the market, the Perten 9500 delivers results in less than 30 seconds.
- Links to the bins being managed by the BinManager®, to share data directly from the SureTrack FARM® platform to the SureTrack PRO® platform, giving processors real-time updates on the condition of their purchase.
- Eligible for state certification, for further verification, and, when linked to BinManager, also allows bins to be segregated based on the characteristics of the grain they contain.
- Easy to use with a large touch screen monitor.

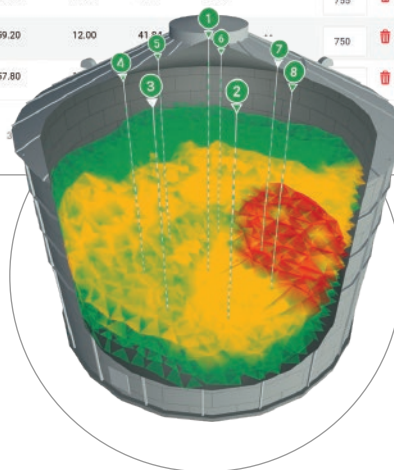


Perten 9500

Tester 6 Results Model: IM 9500

Com...	S... ID	Date	Notes	Bin	Test Weight	M...	Pr...	Oil	S...	Bu...
Wheat	261	02/28/...	Smel	UNAVAILABLE	57.70	11.00	15.68	--	--	750
Corn	259	02/27/...	Note	High Starch	57.80	11.10	8.80	4.10	71.90	750
Corn	258	02/27/...	Note	Assign...	51.40	--	--	--	--	750
Corn	257	02/27/...	Note	High Protein	0.00	--	--	--	--	750
Soybeans	256	01/14/...	Note	High Oil Soy	57.60	15.90	45.17	20.23	--	755
Soybeans	255	01/14/...	Note	High Oil Soy	59.20	12.00	41.84	--	--	750
Soybeans	254	01/14/...	Note	High Oil Soy	57.80	--	--	--	--	750

PREVIOUS 1 2 3



Premium Market Verification

Verify specific grain characteristics that create access to premium marketing opportunities.

Specification Proof

Testing provides processor confidence that your grain will meet their specifications.

Traceability

Provide processors a fully traceable grain ingredient.

Grain Segregation for Profit

Assign grain loads based on test results to segregate bins by characteristic and preserve identity preserved grain status.

DAY-TO-DAY — Coming soon!

With our day-to-day accounting business tools, you can track profitability at the field-level, in real-time, so you can spend less time in the office, and more time on your farm.

ACCOUNTING MANAGEMENT TOOLS

- Breakeven pricing analysis track operation costs to gain insight into your true breakeven cost of production.
 - All-in-one bookkeeping services to increase efficiency.
 - Day-to-day transaction processing.
 - Financial reporting and reconciliation.
 - Tax reporting.
 - Payroll functionality.
-

TRACEABILITY — Coming soon!

Track and trace the grain you produce—from the seed bag to processor storage. Building this bridge across the grain traceability gap creates the on-farm tracking that not only introduces new processor premiums, but also streamlines your recordkeeping process.

ON-FARM TRACKING MANAGEMENT TOOL

- Streamline record keeping by managing and monitoring each step of the production process in one convenient location.
- Never let verification paperwork keep you from growing for a premium market; use SureTrack FARM to manage organic transition and certification paperwork and specialty contract production requirements.
- Create your space within blockchain technology by offering a fully traceable ingredient from seed bag to processor possession.
- Capture premiums through track and trace verification of your grain-ingredient.



Market with
confidence like
never before



MARKETS

Discover market opportunities in your area for commodities and specialty crops, and track applications and contracts to stay current with delivery obligations. Rethink the way you look at the grain market with an extended view of bid history and projections.



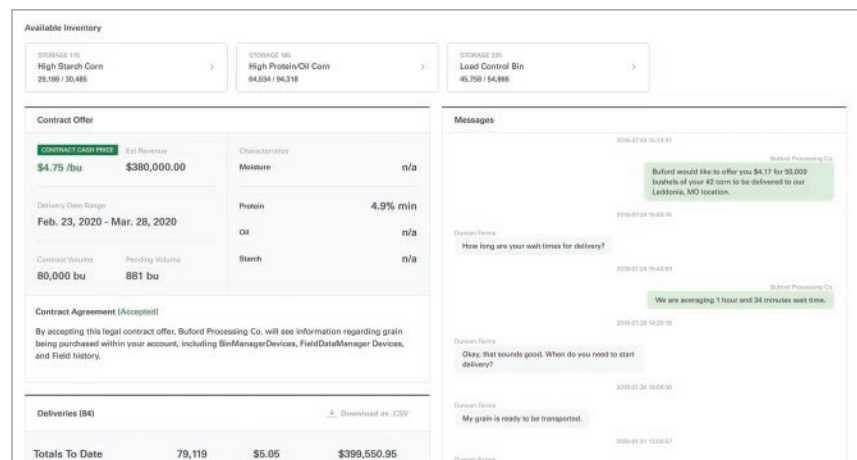
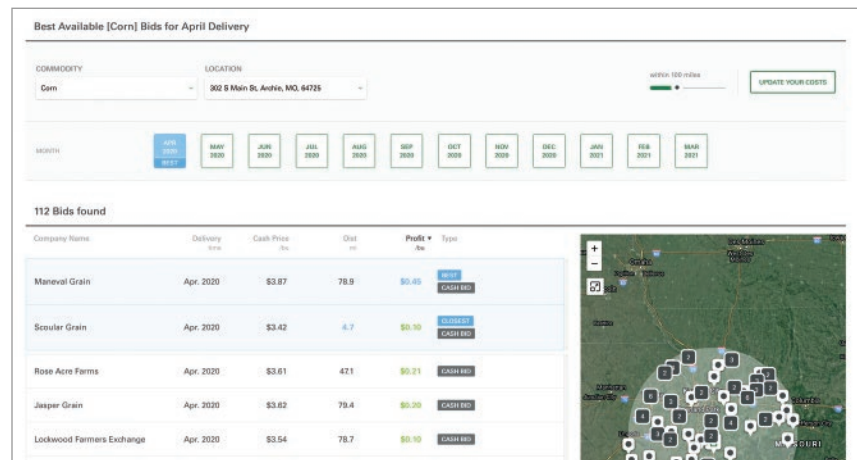
MARKETS MANAGEMENT TOOLS

- Find new market opportunities.
- Manage every marketing opportunity to build your network.
- Access and monitor all of your contracts, negotiations and offers.



FEATURES

- Get a complete, targeted market analysis of marketing opportunities within your selected area.
- Leverage your grain's quality and characteristics by marketing for grain contents such as protein, starch and oil.
- Assess breakeven and true costs when deciding which market offer to negotiate and accept.
- Learn the best, closest and highest bid within your selected area.
- Track facility detail, activity and history to learn more about the company with which you are considering contracting.
- Choose to share your grain quantities and characteristics... or not. The choice is always yours.
- View, negotiate, accept or decline contracts from buyers.
- Store contracts, applications, delivery schedule, delivery history and detail for banking and traceability purposes.



Data Based Marketing Decisions

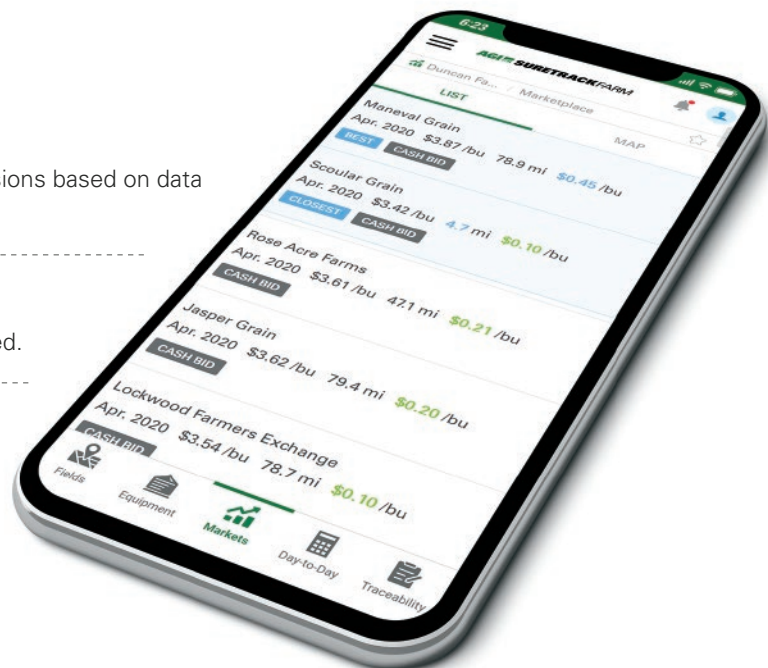
Maximize profits by adapting your marketing decisions based on data and opportunities in your area.

Network Potential

Build your network while tracking bushels delivered.

Convenience

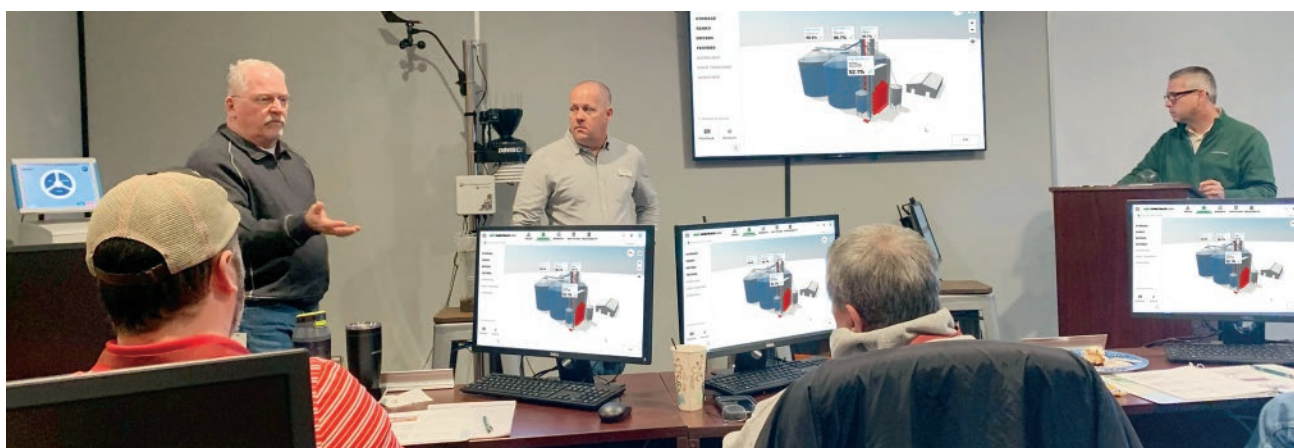
Monitor and track performance by storing all your contracts in one place for easy and convenient access.





PROFITABILITY WITH FLEXIBILITY

Times are tough for family farms and AGI SureTrack® wants to help. SureTrack FARM® technology allows farmers to do more with the land and resources they have; whether it's increased yield, improved quality or a boost in profits. The Subscription Program is making it possible to bring the industry-leading technology — software and hardware — to the farm for a fraction of the cost.



SURETRACK LEARNING CENTER

Every month join us for education and insight on how you can grow for a purpose and improve the story of your farm. SureTrack Clinic is a two-day experience of on-site training designed to bring quality and profitability back to your farm.

Not only will you learn the ins and outs of SureTrack Ready Equipment and Software, but you'll hear from industry experts on improving the science and marketability of your operation. Sessions are the first Thursday and Friday of every month and held at AGI SureTrack headquarters.

For more information, please visit ***AGISURETRACK.COM***

The background of the entire page is a close-up photograph of green corn leaves, showing their characteristic V-shape and ribbed texture. The leaves are layered, creating a sense of depth. A semi-transparent grey rectangular box is centered on the page, containing the text.

YOUR FARM DATA

Using the data from your farm has never been easier or more meaningful. Collected, cleaned, organized and secured data from your farm, for your farm, creates more informed decision-making opportunities and allows you to profit from the data collected. AGI SureTrack is committed to keeping your data secure. It is your data and your decision how to use it.



AGI SureTrack® is an AGI Brand.

AGI is a leading provider of equipment solutions for agriculture bulk commodities including seed, fertilizer, grain, and feed systems with a growing platform in providing equipment and solutions for food processing facilities. AGI has manufacturing facilities in Canada, the United States, the United Kingdom, Brazil, South Africa, India and Italy and distributes its products globally.

AGI  SURETRACK

8040 Bond Street, Lenexa, Kansas, USA 66214-1591

P 855.206.5612 | **F** 816.293.5677 | sales@agisuretrack.com | AGISURETRACK.COM | [agisuretrack](#)    

AGGROWTH.COM [aggrowthintl](#)    