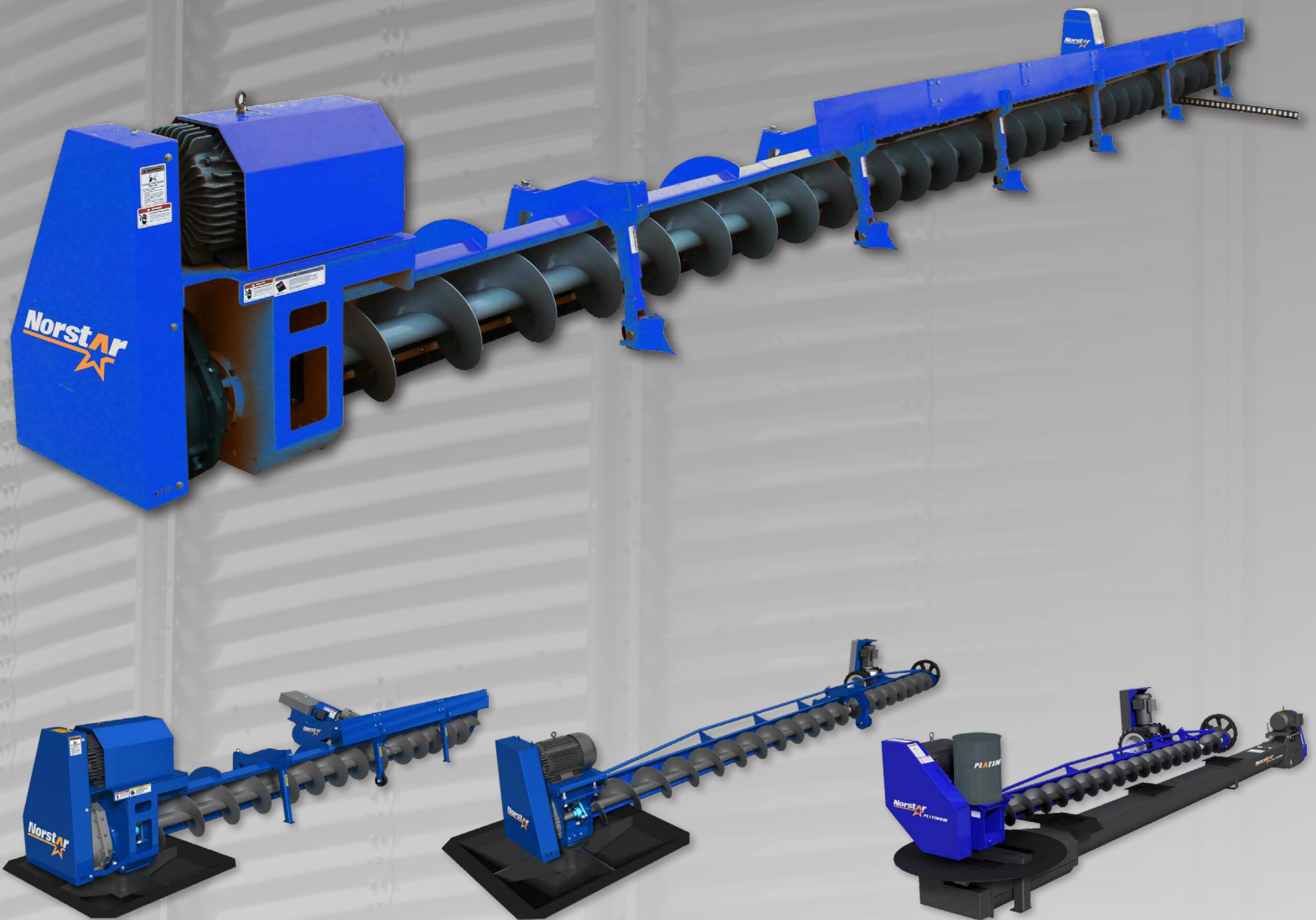


COMMERCIAL BIN SWEEPS

ATLAS™ SERIES | EXPRESS SERIES | PLATINUM SERIES



MOVE WITH EASE. MOVE WITH CONFIDENCE.

The performance of your handling system can be the difference between success and failure in your farm or agri-business. It can save or drain time and money. Planning and building an efficient handling system can help you better manage your costs. It can also be overwhelming with so many factors to consider. You cannot afford to make a mistake. Your profit depends on it.

At Norstar, we do more than build your conveyance equipment; we help you visualize, plan and design a handling system that is custom built to fit your needs. We partner you with experienced dealers and millwrights to fully equip and complete your system. We help make it simple to build a system that maximizes your efficiency and boosts your profit.

MOVE WITH EASE. MOVE WITH CONFIDENCE.

	EXPRESS SWEEP	PLATINUM SERIES	ATLAS™ TRACTOR DRIVE SWEEP	ATLAS™ POSI-TRAC SWEEP
AUGER SIZES	10" or 12"	10" or 12" Sweep 11" or 14" U-Trough Unload	12", 16" or 20"	12", 16" or 20"
COMPATIBLE BIN DIAMETERS	10" Sweep - 30' - 60' 12" Sweep - 30' - 105'	30' - 90'	30' - 150'	30' - 105'
MAXIMUM CAPACITY	10" - 3,000 BPH (75 MT) 12" - 6,500 BPH (163 MT)	10" Sweep - 3,000 BPH (75 MT) 12" Sweep - 6,500 BPH (163 MT) 11" Unload - 8,170 BPH (205 MT) 14" Unload - 12,100 BPH (303 MT)	12" - 6,500 BPH (163 MT) 16" - 10,000 BPH (250 MT) 20" - 20,000 BPH (500 MT)	12" - 6,500 BPH (163 MT) 16" - 10,000 BPH (250 MT) 20" - 20,000 BPH (500 MT)
DRIVE SYSTEM	Weighted Tractor Drive w/ Gear Reduction Wheel	Weighted Tractor Drive w/ Gear Reduction Wheel	Weighted Tractor Drive	Positive Traction Track Drive
CONTROLS	Standard or Auto-Drive Control Panel	Standard or Auto-Drive Control Panel	Standard or Auto-Drive Control Panel	Positive Drive Control Panel
TRUE ZERO-ENTRY	✓	✓	✗	✓
UL LISTED COLLECTOR RING	✓	✓	✓	✓

	STANDARD CONTROL PANEL	AUTO-DRIVE CONTROL PANEL	POSI-TRAC CONTROL PANEL
MAIN DISCONNECT	✓	✓	✓
AUGER ON/OFF SWITCH	✓	✓	✓
DRIVE FWD/OFF/REV SWITCH	✓	✓	✓
DIGITAL ANMETER FOR AUGER MOTOR	✗	✓	N/A
DIGITAL ANMETER FOR AUGER MOTOR & DRIVE MOTOR	✗	✗	✓
AUTO-DRIVE FWD/REV (BASED ON AUGER AMPS)	✗	✓	✓
EMERGENCY STOP BUTTON	✓	✓	✓
OVERLOAD INDICATOR LIGHTS & RESET BUTTONS	✓	✓	✓
BROKEN BELT DETECTION	✗	✗	✓

EXPRESS SWEEP

FEATURES & BENEFITS

AFFORDABLE COMMERCIAL CLEANOUT PERFORMANCE

Norstar's Express Sweep is designed to bridge the gap between farm series and commercial grade sweeps. The Express provides a unique combination of size and power that fits operations looking for capacity and strength that a farm series sweep cannot provide, at a price more accessible than a fully commercial unit would not be cost-effective.

CAPACITY

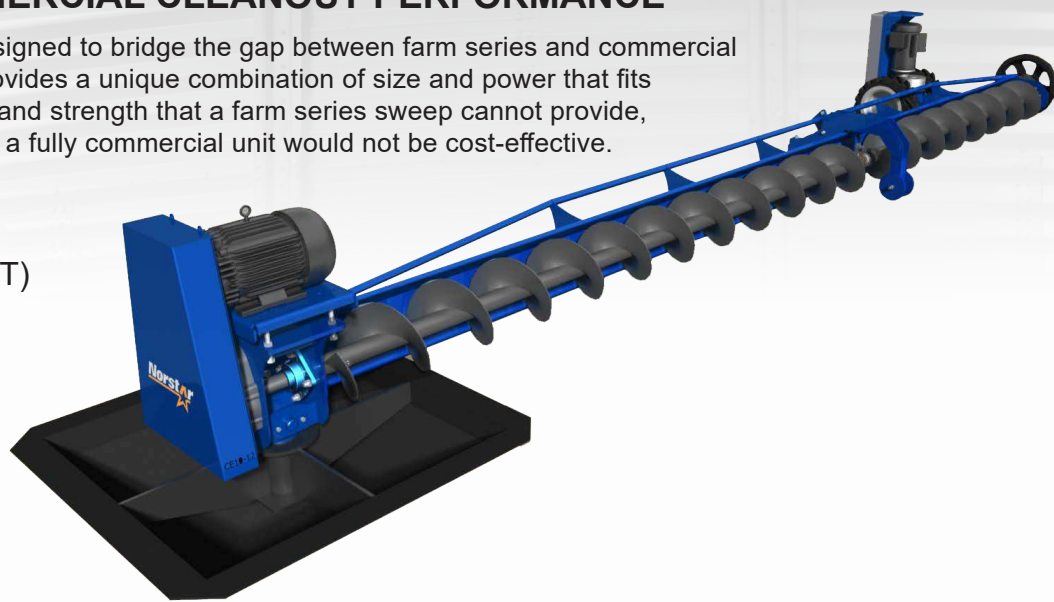
► up to 6,500 BPH (163 MT)

COMPATIBLE BINS

► 30' - 105' dia.

TRUE ZERO-ENTRY

► Yes (with Collector Ring)



BOOST YOUR SWEEP POWER:

The Express features a motorized tractor drive that drives the sweep forward into the grain pile with more power than any farm-series sweep. 16" foam filled tires allow the drive to move across the bin floor with ease and the included weight plates allow you to adjust the weight on the drive for reliable traction and forward motion.



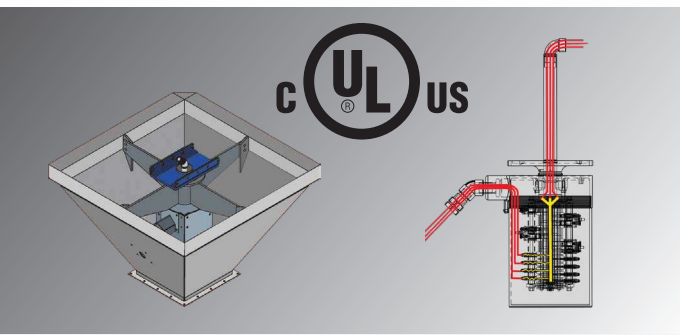
MINIMAL ADJUSTMENT REQUIRED:

The Carrier Wheel assembly stabilizes the Express and adds rigidity to longer units. It only requires a single adjustment at install with no need for further action.



ADDED TRACTION:

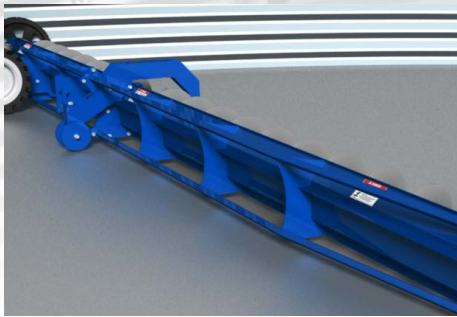
The SureGrip™ is the most reliable sweep wheel on the market. The wheel's 16" design with vulcanized rubber tread provides solid traction and durability over many years of use. The SureGrip™ has a 16:1 gear reduction which minimizes slippage and enhances forward motion into the grain pile.



KEEPING YOU SAFE:

Our industry exclusive UL Listed Collector Ring allows power cables to be run to the sweep from underneath the bin floor. It eliminates the risk of cable twisting.

FEATURES & BENEFITS



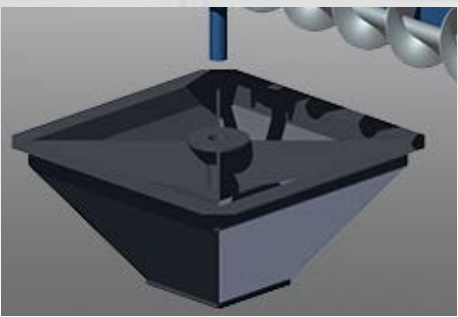
DURABLE BACKBOARD:

The skeletal frame allows the sweep to be wrapped in grain when buried, reducing load stress



THICK-EDGE FLIGHTING:

The thickened edge of the auger flight increases durability by 30% and grabs more grain for increased capacity.



SUMP PITS:

We offer Corded Sump Pits as well as Collector Ring Pits with capacities of over 90,000 BPH (2,300 MT).



CONTROL PANELS:

Control your sweep easily and safely using one of Norstar's Control Panel options.

Standard Control Panel

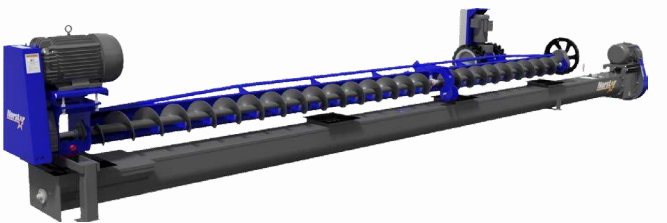
- Auger ON/OFF Switch
- Drive FWD/OFF/REV Switch
- Emergency Stop
- Motor Overloads w/ indicators
- Can operate up to two drives

Auto-Drive Control Panel

- All standard panel features
- Digital Ammeter for auger amps
- Auto-Drive forward or reverse based on auger amps

U-TROUGH UNLOAD COMPATIBLE:

The Express can combine with a U-Trough Unload using our Double-Beam EX U-Trough Receiver Package, making it an excellent solution for operations that have farm-series equipment but want a boost in takeout capacity.



KEY FEATURES:

- 10" or 12" sweep models
- Capacities up to 3,000 BPH/90 MT (10") or 6,500 BPH/195 MT (12")
- Motorized Tractor Drive w/ dual foam tires and adjustable weight load
- SureGrip™ 16:1 Gear Reduction Sweep Wheel
- Single-adjustment Carrier Wheel assembly
- Thickened edge flighting for increased lifespan
- Skeletonized backboard design for durability
- Adjustable Motor-Mount
- Durable Powder Coat Finish
- CE Certified

OPTIONAL FEATURES:

- Exclusive UL Listed Collector Ring & Sump (ATEX Collector Ring Available)
- Corded Sump
- Combine with a U-Trough Unload with Norstar's U-Trough EX or Platinum Series
- Track Strips & Parking Plates
- Standard Control Panel
- Auto-Drive Control Panel

PLATINUM SERIES

FEATURES & BENEFITS

A COMPLETE ZERO-ENTRY UNLOADING SYSTEM

The Platinum Series is an innovative sweep/unload system that fully integrates our U-Trough Unload and Express Sweep in a way that allows for Zero-Entry operation. The Platinum Series provides exceptional power, capacity and safe operation.

SWEEP CAPACITY

► up to 6,500 BPH (163 MT)

UNLOAD CAPACITY

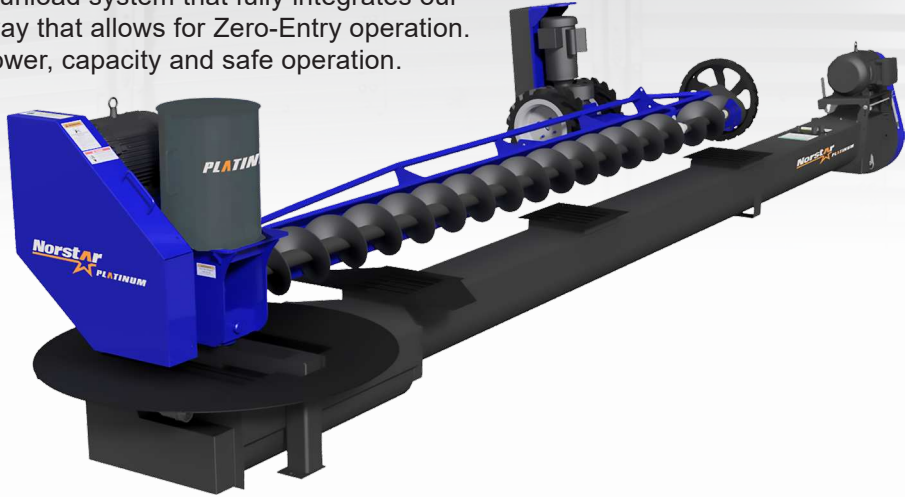
► up to 12,100 BPH (363 MT)

COMPATIBLE BINS

► 30' - 90' dia.

TRUE ZERO-ENTRY

► Yes



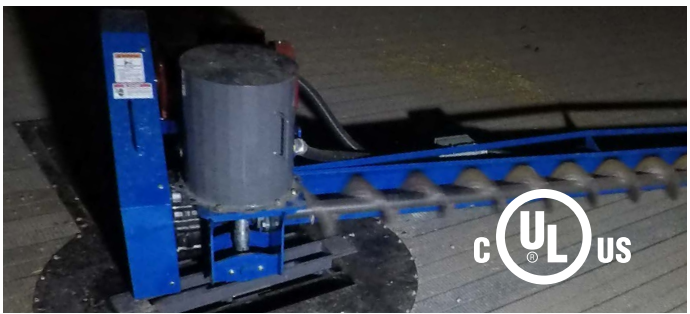
A FULLY INTEGRATED SYSTEM:

The sweep is mounted to the u-trough unload via a center receiver. The unit's Twin-Flight Center Sump allows for power cables to run up through the unload center sump to the sweep while maintaining maximum capacity at center sump.



HASSLE-FREE UNLOADING:

The Platinum Series comes standard with an Emergency Sump that allows for continued unloading in case the center sump becomes plugged.



PROVIDING ZERO-ENTRY OPERATION:

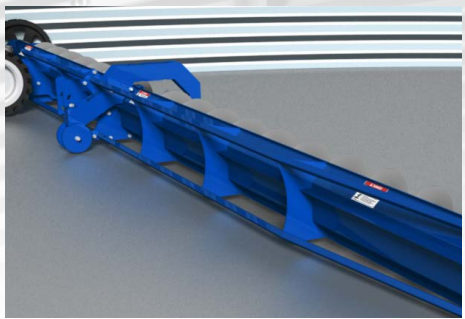
A UL Listed Collector Ring comes with every Platinum and is mounted on the powerhead above the bin floor. This allows power cables to be run to the sweep from underneath the bin floor and eliminates the risk of power cable twisting for safer operation.



RELIABLE SWEEP PERFORMANCE:

A Motorized Tractor Drive and our 16" SureGrip™ Gear Reduction Wheel ensure that your sweep is constantly moving forward into the grain pile cleaning your bin.

FEATURES & BENEFITS



DURABLE BACKBOARD:

The skeletal frame allows the sweep to be wrapped in grain when buried, reducing load stress



THICK-EDGE FLIGHTING:

The thickened edge of the auger flight increases durability by 30% and grabs more grain for increased capacity.



MAINTENANCE ACCESS:

Easily access under-floor components via removable panels at Twin-Flight Sump and Emergency Sump.



SWEEP ONLY OPTION:

The Platinum can be used as a sweep-only solution. The Above-Floor Collector Ring allows the Platinum to be compatible with a variety of gravity unload solutions, including drag, belt and chain loop conveyance systems.

KEY FEATURES:

- Unload capacities up to 8,170 BPH/245 MT (11") or 12,100 BPH/363 MT (14")
- Standard Emergency Sump for reliable unloading
- Twin-Flight Center Sump with center sweep receiver
- Panel behind center sump for maintenance access
- Rack & Pinion Unload Gate Controls
- Sweep capacities up to 3,000 BPH/90 MT (10") or 6,500 BPH/195 MT (12")
- Exclusive UL Listed Above Floor Collector Ring (ATEX Collector Ring Available)
- Motorized Tractor Drive w/ dual foam tires and adjustable weight load
- SureGrip™ 16:1 Gear Reduction Sweep Wheel
- Single-adjustment Carrier Wheel assembly
- Thickened edge flighting for increased lifespan (Unload & Sweep)
- Skeletonized backboard design for durability
- Adjustable Motor-Mount
- Durable Powder Coat Finish
- Control Panel for efficient and safe sweep operation

OPTIONAL FEATURES:

- Standard Control Panel
- Auto-Drive Control Panel
- Sweep Tracks and Parking Plates for bin floor protection



ATLAS™ TRACTOR DRIVE

FEATURES & BENEFITS

A TRUE WORKHORSE

Norstar's ATLAS™ sweeps are hard at work in some of the largest bins in the world. The ATLAS™ is designed to handle the extreme demands of large commercial grain storage and provide an efficient cleanout experience. Features like our Advanced Tractor Drive and Avalanche Guard ensure long-lasting performance.

CAPACITY

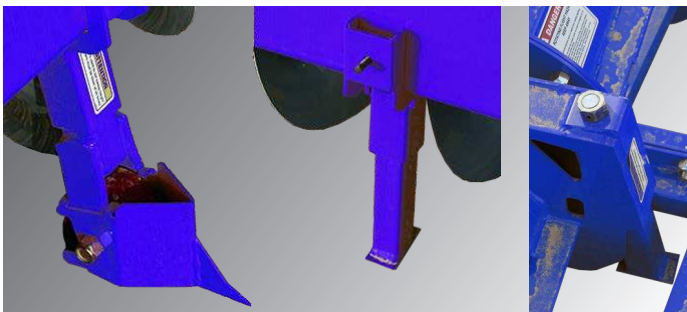
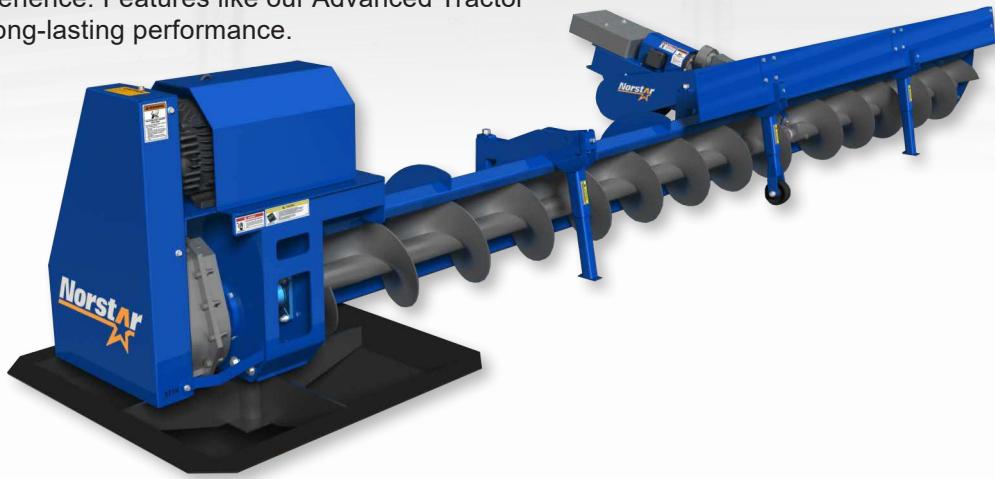
- ▶ up to 20,000 BPH (500 MT)

COMPATIBLE BINS

- ▶ 30' - 150' dia.

TRUE ZERO-ENTRY

- ▶ No (adjustable wheels)



ADVANCED POWER:

This advanced Tractor Drive provides the needed power to efficiently cleanout your bin. With over 800 lbs of thrust the ATLAS™ will power through the grain pile. 300 lbs of weight plates are included so that you can adjust the weight to fit your needs. (2 drives on 72' units & larger)



AVALANCHE PROTECTION:

Ensure continuous bin cleanout. The Avalanche Guard spans the length of the sweep and keeps the sweep from being buried in the event of an avalanche.

ADJUSTABLE TO YOUR CONDITIONS:

Front castor wheels and both front and rear jacks ensure proper sweep level and movement. Both the wheels and jacks are adjustable and allow you to account for variable bin floor conditions. The castor wheels feature a plow for efficient movement into grain pile.



BUILT FOR STRENGTH:

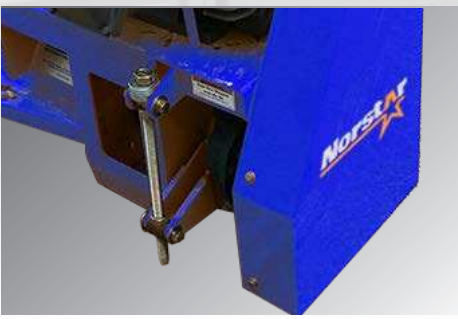
ATLAS™ sweeps are built to last. Our sweep backboard is designed to handle commercial storage weight while remaining low-profile.

FEATURES & BENEFITS



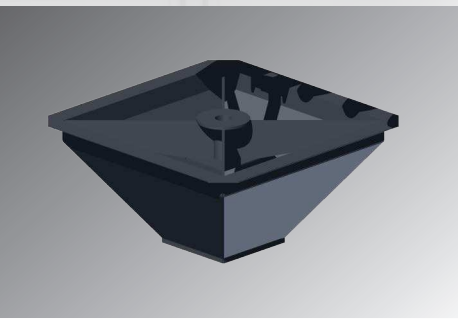
THICK-EDGE FLIGHTING:

The thickened edge of the auger flight increases durability by 30% and grabs more grain for increased capacity.



BELT ADJUSTMENT:

Adjusting your belts is simple with our standard Torque Arm assembly. No other measures are required.



SUMP PITS:

We offer Corded Sump Pits as well as Collector Ring Pits with capacities of over 90,000 BPH (2,300 MT).



CONTROL PANELS:

Control your sweep easily and safely using one of Norstar's Control Panel options.

Standard Control Panel

- Auger ON/OFF Switch
- Drive FWD/OFF/REV Switch
- Emergency Stop
- Motor Overloads w/ indicators
- Can operate up to two drives

Auto-Drive Control Panel

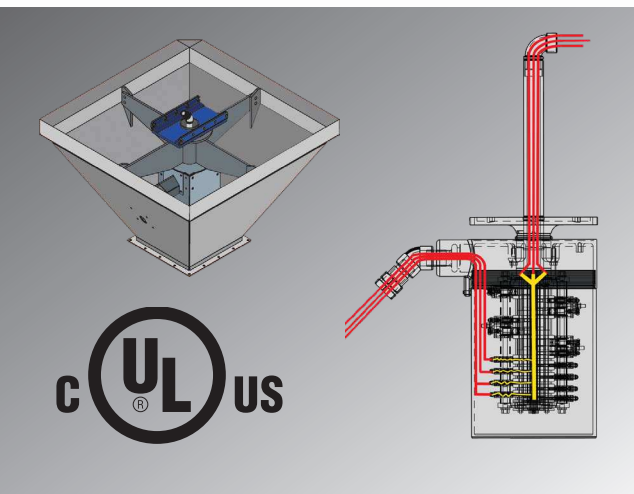
- All standard panel features
- Digital Ammeter for auger amps
- Auto-Drive forward or reverse based on auger amps

KEY FEATURES:

- Sweep capacities from 6,500 BPH/195 MT (12"), 10,000 BPH/300 MT (16") and 20,000 BPH/500 MT (20")
- Advanced Tractor Drive
- Adjustable Castor Wheels and Jacks
- Avalanche Guard
- Heavy-Duty 2" Square Truss design
- Shaft-mounted DODGE gearbox
- Torque Arm belt adjustment
- Auger and Drive Motors included in sweep package
- Thickened edge flighting for increased lifespan & capacity
- Powder Coated Finish
- CE Certified

OPTIONAL FEATURES:

- Exclusive UL Listed Collector Ring & Sump (ATEX Collector Ring Available)
- Corded Sump
- Track Strips & Parking Plates
- Standard Control Panel
- Auto-Drive Control Panel



SAFE OPERATION:

Our industry exclusive UL Listed Collector Ring (recognized in both Canada and the United States) allows power cables to be safely run underneath the bin floor to the sweep. It eliminates the risk of cable twisting and makes it unnecessary to enter the bin in order to untangle power cables.

UNMATCHED POWER & TRACTION

The ATLAS™ Posi-Trac sweep provides your operation with the power and durability of the ATLAS™ Tractor Drive but adds the efficiency of a Positive Drive system to ensure optimal traction during clean-out. Combined with our UL Listed Collector Ring Sump the ATLAS™ Posi-Trac is unmatched in traction, power and safety.

CAPACITY

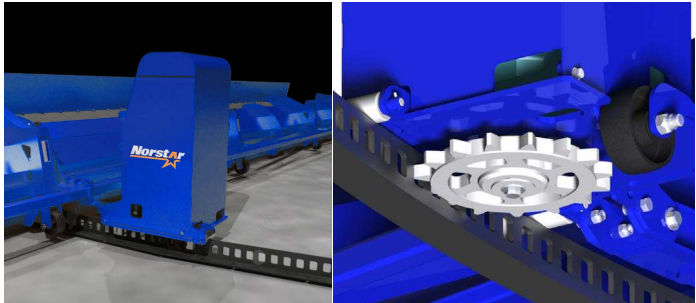
- ▶ up to 20,000 BPH (500 MT)

COMPATIBLE BINS

- ▶ 30' - 105' dia.

TRUE ZERO-ENTRY

- ▶ Yes (with Collector Ring)



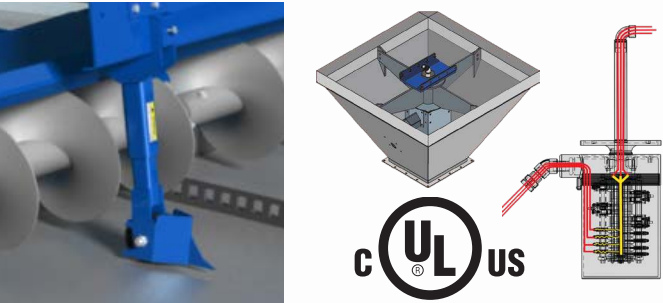
POSITIVE TRACTION:

The Posi-Trac features a drive with a gear and sprocket design that links with a curved track that is installed on top of the bin floor. There is constant contact between the sprocket and the track which eliminates slippage and ensures forward motion with 1900 lbs of thrust power.



THOROUGH CLEANOUT:

Each Posi-Trac comes with a rubber sweep strip on the bottom of the backboard. The sweep strip collects grain that gets past the auger for a thorough cleanout.



TRUE ZERO-ENTRY:

Both the front and rear wheels only require a one-time adjustment at install. Our exclusive UL Listed Collector Ring and Sump (Canada & US) allows power to reach the sweep without any twisting of the power cables during operation and no need to enter the bin to disconnect.



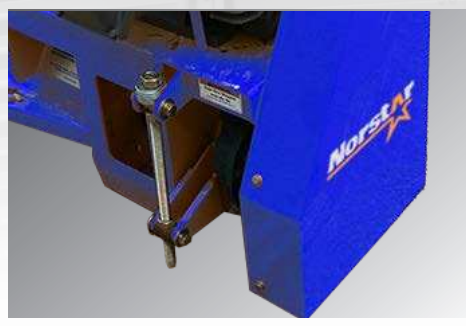
AVALANCHE GUARD:

Ensure continuous bin cleanout. The Avalanche Guard spans the length of the sweep and keeps the sweep from being buried in the event of an avalanche.



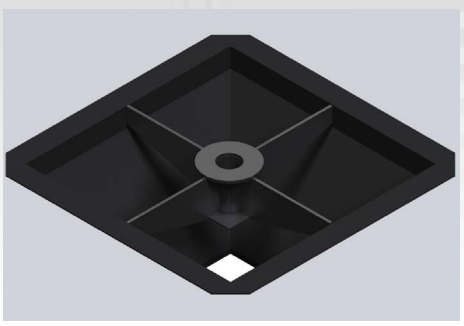
THICK-EDGE FLIGHTING:

The thickened edge of the auger flight increases durability by 30% and grabs more grain for increased capacity.



BELT ADJUSTMENT:

Adjusting your belts is simple with our standard Torque Arm assembly. No other measures are required.



SUMP PITS:

We offer Coded Sump Pits as well as Collector Ring Pits with capacities of over 90,000 BPH (2,300 MT).



POSI-TRAC CONTROL PANEL:

Operate with unmatched safety and efficiency. The Posi-Trac Panel will automatically drive the sweep forward or reverse the sweep based on the level of amps being generated by the motor. This provides maximum efficiency and prevents motor overload during clean-out.

- Auger ON/OFF Switch
- Drive FWD/OFF/REV Switch
- Digital Ammeter for Drive Motor (helps detect broken belt)
- Digital Ammeter for Auger Motor
- Emergency Stop
- Overload Indicator Lights

KEY FEATURES:

- Sweep capacities from 6,500 BPH/195 MT (12"), 10,000 BPH/300 MT (16") and 20,000 BPH/500 MT (20")
- Posi-Trac Positive Drive System (includes track and applicable hardware for bin floor)
- Posi-Trac Control Panel (standard with all models)
- One-time adjustment front and rear wheels
- Avalanche Guard
- Heavy-Duty 2" Square Truss design
- Shaft-mounted DODGE gearbox
- Torque Arm belt adjustment
- Rigid Motor Mount
- Auger and Drive Motors included in sweep package
- Thick-edge flighting for increased lifespan & capacity
- Powder Coated Finish
- CE Certified

OPTIONAL FEATURES:

- Exclusive UL Listed Collector Ring & Sump
- Coded Sump
- Track Strips & Parking Plates
- Standard Control Panel
- Auto-Drive Control Panel



UNMATCHED POWER & TRACTION

Norstar offers a range of conveyance options for under-bin takeout. Whether you are looking for a high-capacity tunnel conveyance system or conveyance that fits under the bin floor, we have a solution for you.

EN-MASSE CHAIN CONVEYORS

Our En-Masse Chain Conveyors are an efficient form of conveyance that can achieve high capacities with minimal horsepower required. Chain conveyance generates less torque than a screw auger can handle more product more efficiently. Generally En-Masse conveyors are utilized in a tunnel system when used as a bin takeout.



CAPACITY

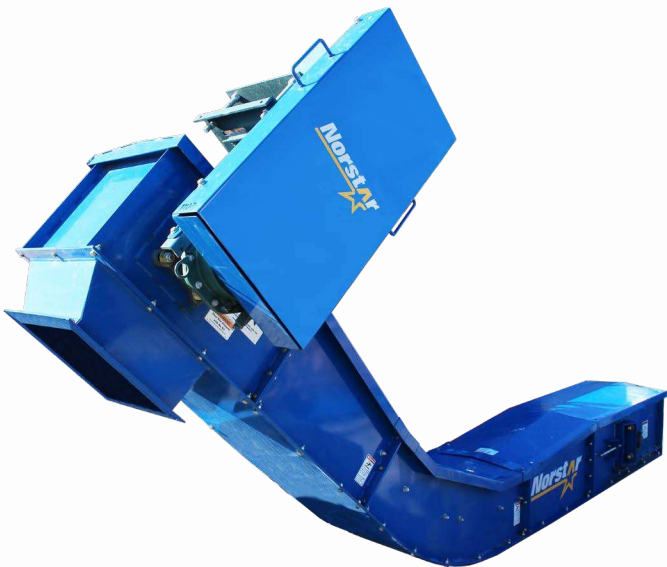
► up to 48,000 BPH (1200 MT)

MAX LENGTH

► 150'

INCLINE CHAIN CONVEYORS

The Incline Chain Conveyor gives you the ability to move grain at a higher degree of incline compared to an En-Masse. The taller paddles allow the conveyor to efficiently move product with minimal fallback. An Incline Conveyor will be used if the operation wishes to unload directly into a truck, leg or other elevated intake.



CAPACITY

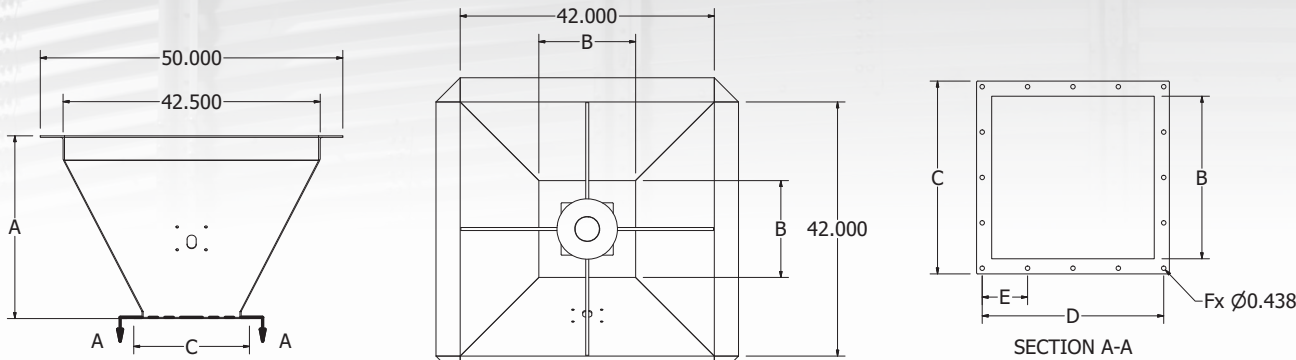
► up to 36,000 BPH (900 MT)

MAX INCLINE

► 45°

FOR MORE INFORMATION ON
COMMERCIAL BIN UNLOADING CONVEYANCE
PLEASE CALL US AT 1.855.746.8200

SUMP SPECS (COLLECTOR RING & CORDED SUMPS):



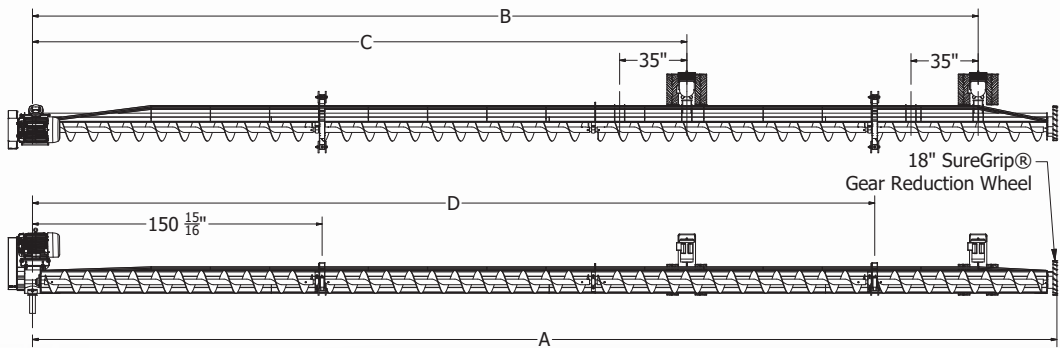
Collector Ring Sump

Model Number	A	B	C	D	E	F	Max Capacity (BPH)	Max Capacity (MT/Hr)
42x42x30 x 16 Sq	30.188"	16.000"	19.125"	18.000"	4.500"	16	15819.7	401.8
42x42x30 x 18 Sq	30.188"	18.000"	21.125"	20.000"	5.000"	16	19902.7	505.5
42x42x30 x 20 Sq	30.188"	20.000"	23.125"	22.000"	5.500"	16	24472.7	621.6
42x42x30 x 24 Sq	30.188"	24.000"	27.125"	26.000"	4.333"	24	35091.6	891.3
42x42x30 x 30 Sq	30.188"	30.000"	34.125"	32.375"	4.625"	28	54681.8	1388.9
42x42x30 x 36 Sq	30.188"	36.000"	40.125"	38.625"	4.828"	32	78336.3	1989.7

Corded Sump

Model Number	A	B	C	D	E	F	Max Capacity (BPH)	Max Capacity (MT/Hr)
42x42x24 x 16 Sq	24.188"	16.000"	19.125"	18.000"	4.500"	16	17920	455.2
42x42x30 x 16 Sq	30.188"	16.000"	19.125"	18.000"	4.500"	16	17920	455.2
42x42x30 x 18 Sq	30.188"	18.000"	21.125"	20.000"	5.000"	16	22680	576.1
42x42x30 x 20 Sq	30.188"	20.000"	23.125"	22.000"	5.500"	16	28000	711.2
42x42x30 x 24 Sq	30.188"	24.000"	27.125"	26.000"	4.333"	24	40320	1024.1
42x42x30 x 30 Sq	30.188"	30.000"	34.125"	32.375"	4.625"	28	63000	1600.2
42x42x30 x 36 Sq	30.188"	36.000"	40.125"	38.625"	4.828"	32	90720	2304.3

EXPRESS SWEEP SPECS 30' - 105' BINS:



MODEL NO.	SECTIONS	A	B	C	D
CEX030	2	175.389"	136.531"	n/a	n/a
CEX033	2	193.389"	136.531"	n/a	n/a
CEX036	2	211.389"	169.375"	n/a	n/a
CEX042	2	247.172"	205.375"	n/a	n/a
CEX048	2	282.922"	242.125"	n/a	n/a
CEX054	2	318.735"	277.938"	n/a	n/a
CEX060	3	354.547"	280.500"	n/a	n/a
CEX072	3	426.235"	385.438"	280.500"	n/a
CEX075	3	444.110"	403.313"	280.500"	294.938"
CEX078	3	462.047"	421.250"	280.500"	294.938"
CEX090	4	533.610"	492.813"	341.000"	438.938"
CEX105	4	623.110"	582.313"	341.000"	438.938"

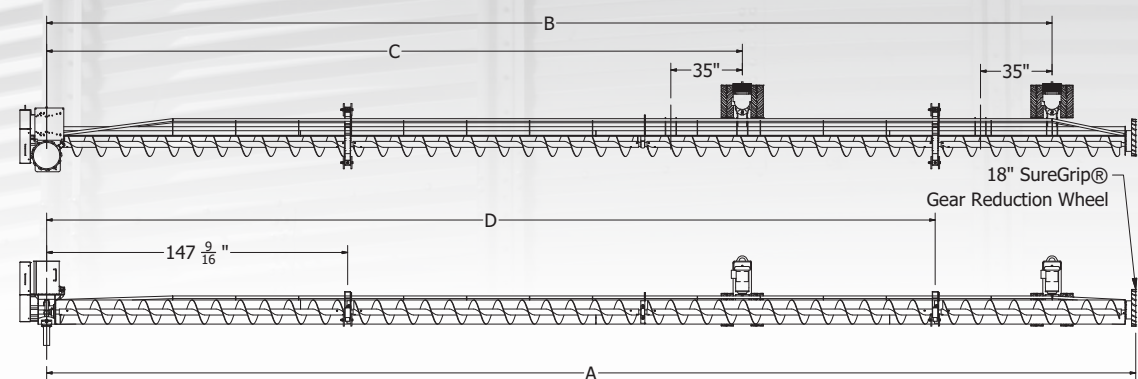
Recommended # of Support Wheels:
CEX036-CEX072 - 1
CEX075-CEX105 - 2

Recommended # of Drives:
CEX030-CEX060 - 1
CEX072-CEX105 - 2

'X' identifies size. For correct Model,
Substitute 'X' with 10 or 12.

CE10 Flighting Diameter - 8.900"
CE12 Flighting Diameter - 11.875"

PLATINUM SWEEP SPECS 30' - 105' BINS:



MODEL NO.	SECTIONS	A	B	C	D
EPX030	2	175.389"	136.531"	n/a	n/a
EPX033	2	193.389"	136.531"	n/a	n/a
EPX036	2	211.389"	169.375"	n/a	n/a
EPX042	2	247.172"	205.375"	n/a	n/a
EPX048	2	282.922"	242.125"	n/a	n/a
EPX054	2	318.735"	277.938"	n/a	n/a
EPX060	3	354.547"	280.500"	n/a	n/a
EPX072	3	426.235"	385.438"	280.500"	n/a
EPX075	3	444.110"	403.313"	280.500"	291.438"
EPX078	3	462.047"	421.250"	280.500"	291.438"
EPX090	4	533.610"	492.813"	341.000"	435.438"
EPX105	4	623.110"	582.313"	341.000"	435.438"

Recommended # of Support Wheels:
EPX036-EPX072 - 1
EPX075-EPX105 - 2

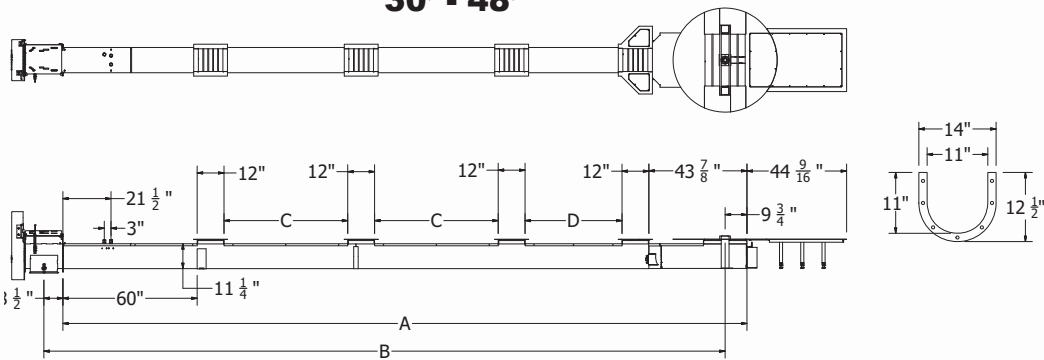
Recommended # of Drives:
EPX030-EPX060 - 1
EPX072-EPX105 - 2

'X' identifies size. For correct Model, Substitute 'X' with 10 or 12.

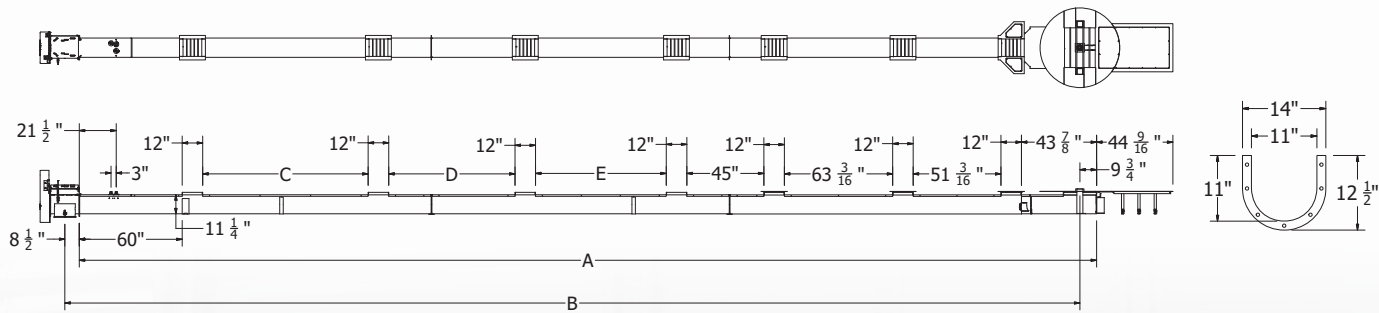
CE10 Flying Diameter - 8.900"
CE12 Flying Diameter - 11.875"

PLATINUM UNLOAD SPECS 30' - 105' BINS:

30' - 48'



54' - 90'



30' - 48'

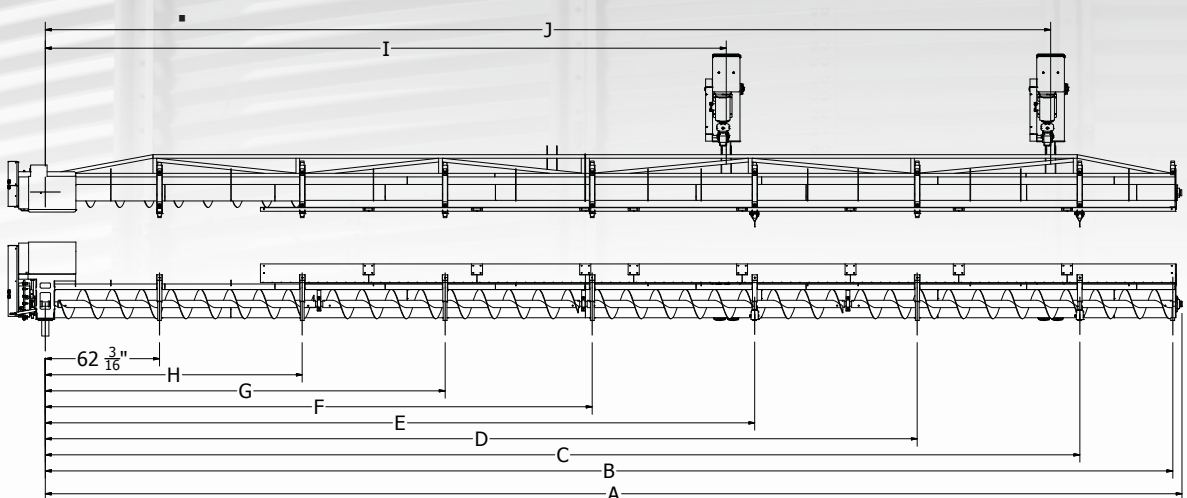
MODEL NO.	INTERMEDIATE GATES	A	B	C	D
UP11030	2	236.158"	234.919"	54.156"	42.156"
UP11033	2	250.721"	249.481"	61.438"	49.438"
UP11036	2	268.721"	267.481"	70.438"	58.438"
UP11042	3	305.685"	304.419"	55.271"	43.271"
UP11048	3	344.658"	343.419"	68.271"	56.271"

54' - 90'

MODEL NO.	INTERMEDIATE GATES	A	B	C	D	E
UP11054	4	377.786"	376.546"	54.565"	n/a	n/a
UP11060	4	413.786"	412.546"	90.565"	n/a	n/a
UP11072	5	485.802"	484.562"	74.298"	n/a	76.283"
UP11075	5	503.802"	502.562"	92.298"	n/a	76.283"
UP11078	5	521.797"	520.557"	110.293"	n/a	76.283"
UP11090	6	593.797"	592.586"	96.576"	73.717"	76.283"

ATLAS™ TRACTOR DRIVE SPECS 30' - 105' BINS:

FOR 12" & 16" MODELS

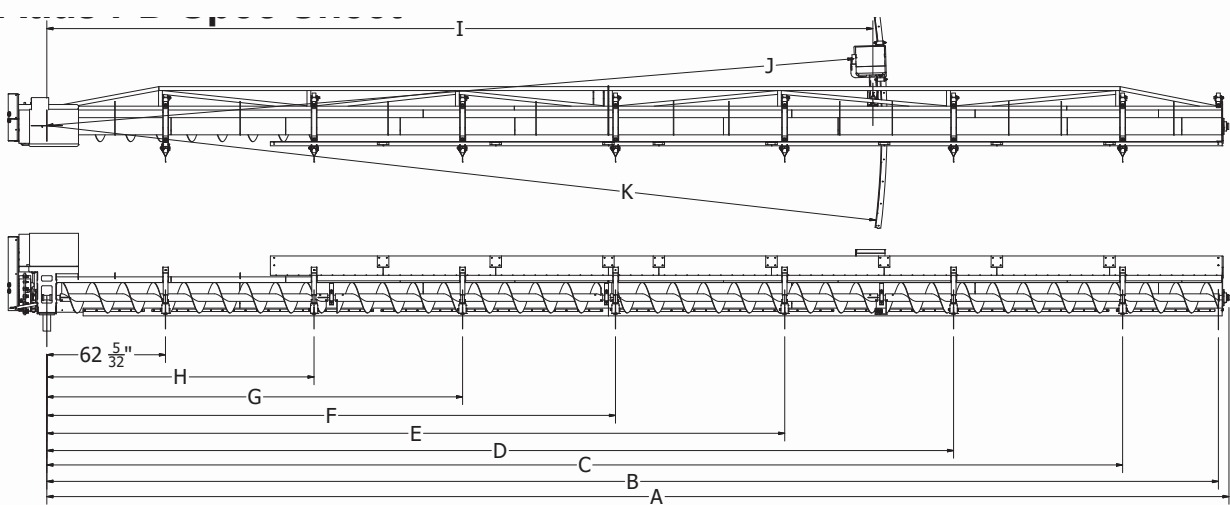


'1X' identifies size. For correct model, substitute '1X' with 12 or 16.

MODEL NO.	SECTIONS	A	B	C	D	E	F	G	H	I	J
AT1X030	1	173 13/16"	168 3/4"	118 1/4"	n/a	n/a	n/a	n/a	n/a	102 1/4"	n/a
AT1X033	1	191 13/16"	196 3/4"	136 1/4"	n/a	n/a	n/a	n/a	n/a	120 1/4"	n/a
AT1X036	1	209 13/16"	204 3/4"	154 1/4"	n/a	n/a	n/a	n/a	n/a	138 1/4"	n/a
AT1X042	1	244 13/16"	239 3/4"	189 1/4"	125 23/32"	n/a	n/a	n/a	n/a	173 1/4"	n/a
AT1X048	1	281 3/8"	276 5/16"	225 13/16"	144"	n/a	n/a	n/a	n/a	209 13/16"	n/a
AT1X054	1	317 3/8"	312 5/16"	262 3/16"	162 3/16"	n/a	n/a	n/a	n/a	245 13/16"	n/a
AT1X060	2	351 1/2"	346 7/16"	297 13/16"	217 11/16"	139 15/16"	n/a	n/a	n/a	276"	n/a
AT1X072	2	422 1/2"	417 7/16"	366 13/16"	297 13/16"	217 11/16"	139 15/16"	n/a	n/a	276"	350 15/16"
AT1X075	2	438 1/2"	433 7/16"	382 13/16"	297 13/16"	217 11/16"	139 15/16"	n/a	n/a	276"	366 15/16"
AT1X078	2	457 1/2"	452 7/16"	401 13/16"	297 13/16"	217 11/16"	139 15/16"	n/a	n/a	276"	385 15/16"
AT1X090	2	529 1/2"	524 7/16"	473 13/16"	385 13/16"	297 13/16"	217 11/16"	139 15/16"	n/a	276"	457 15/16"
AT1X105	2	619"	613 15/16"	563 5/16"	474 13/16"	386 5/16"	297 13/16"	217 11/16"	139 15/16"	370 13/16"	547 7/16"

ATLAS™ POSI-TRAC SPECS 30' - 105' BINS:

FOR 12" & 16" MODELS



'1X' identifies size. For correct model, substitute '1X' with 12 or 16.

MODEL NO.	SECTIONS	A	B	C	D	E	F	G	H	I	J	K
AP1X030	1	173 13/16"	168 1/4"	118 9/32"	n/a	n/a	n/a	n/a	n/a	144 1/2"	135 7/8"	148 31/32"
AP1X033	1	191 13/16"	186 1/4"	136 9/32"	n/a	n/a	n/a	n/a	n/a	144 1/2"	135 7/8"	148 31/32"
AP1X036	1	209 13/16"	204 1/4"	154 9/32"	n/a	n/a	n/a	n/a	n/a	144 1/2"	135 7/8"	148 31/32"
AP1X042	1	244 13/16"	239 1/4"	189 7/32"	125 3/4"	n/a	n/a	n/a	n/a	144 1/2"	135 7/8"	148 31/32"
AP1X048	1	281 3/8"	275 13/16"	225 31/32"	136 9/32"	n/a	n/a	n/a	n/a	144 1/2"	135 7/8"	148 31/32"
AP1X054	1	317 3/8"	311 13/16"	262 5/32"	162 7/32"	n/a	n/a	n/a	n/a	144 1/2"	135 7/8"	148 31/32"
AP1X060	2	351 1/2"	345 15/16"	297 25/32"	217 21/32"	139 31/32"	n/a	n/a	n/a	288 7/8"	280"	292 27/32"
AP1X072	2	422 1/2"	416 15/16"	366 27/32"	297 25/32"	217 21/32"	139 31/32"	n/a	n/a	288 7/8"	280"	292 27/32"
AP1X075	2	438 1/2"	432 15/16"	382 27/32"	297 25/32"	217 21/32"	139 31/32"	n/a	n/a	288 7/8"	280"	292 27/32"
AP1X078	2	457 1/2"	451 15/16"	401 27/32"	297 25/32"	217 21/32"	139 31/32"	n/a	n/a	288 7/8"	280"	292 27/32"
AP1X090	2	529 1/2"	523 15/16"	473 25/32"	385 27/32"	297 25/32"	217 21/32"	139 31/32"	n/a	432 1/2"	424 1/16"	436 61/64"
AP1X105	2	619"	613 7/16"	563 9/32"	474 25/32"	386 11/32"	297 25/32"	217 21/32"	139 31/32"	432 1/2"	424 1/16"	436 61/64"



Call 1.855.746.8200 or visit www.norstarmfg.com for more product information.

All illustrations, photographs and specifications found in this brochure are based on the latest information at the time of publication. Design and specification of products is subject to change without notice, please contact your local dealer for product information and availability.

© 2020 Norstar Industries Ltd.

